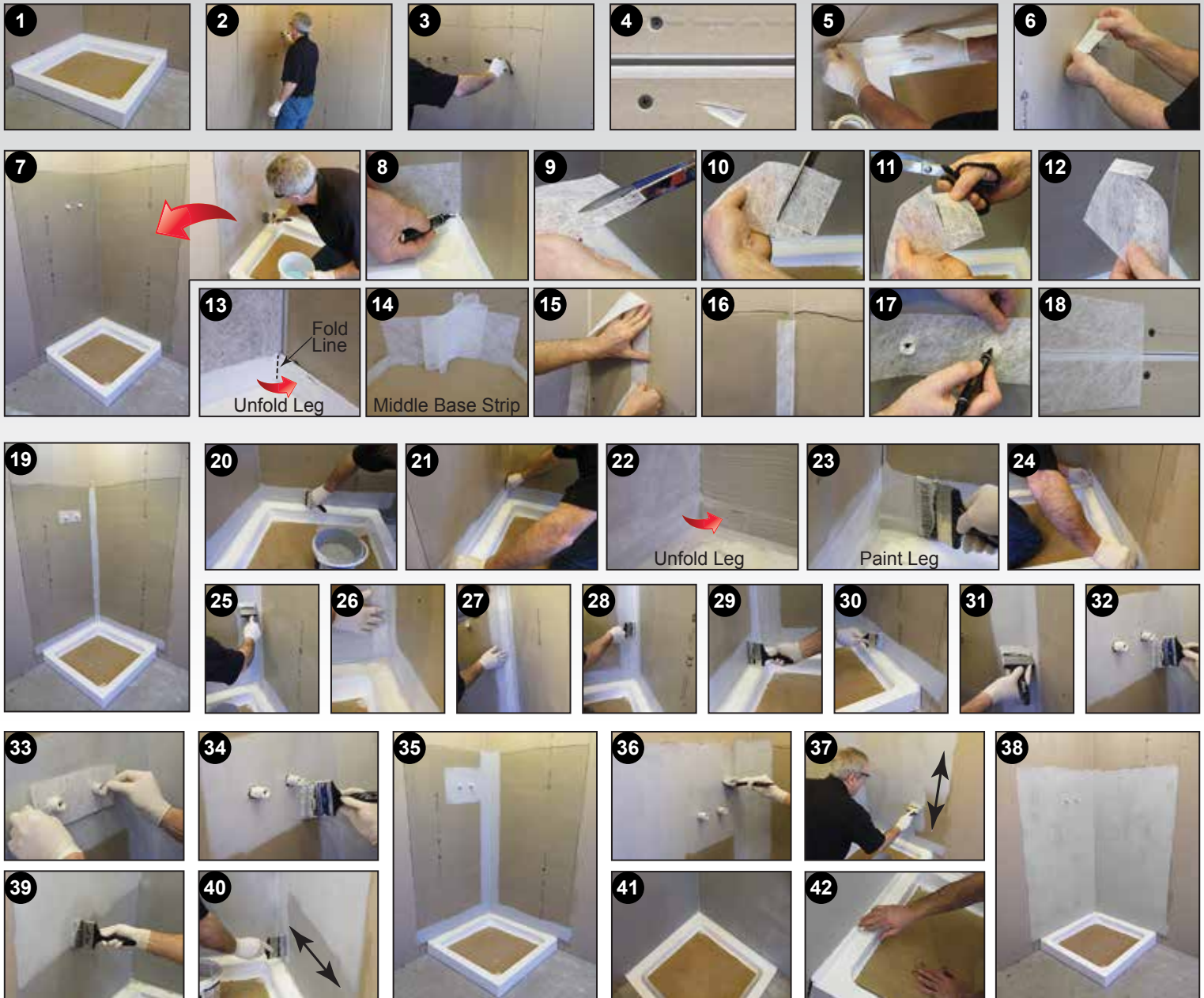




BAL Waterproofing Kit Installation Instructions

1-6 Protect the shower tray or bath base. Mark out splash zone which should extend 100mm outside shower area and upward to shoulder height. Clean loose particles off the walls. Wall surfaces should be smooth, flush fill all recesses with filler. Apply masking tape over strip and ledge surfaces. Mask pipes and all fitting protrusions.



7 Shake, pour APD Primer into container and prime walls. **8-14** Cut the polyester base tapes and notch as required to ensure one leg can extend around each corner. **15-16** Laying the polyester tape against a wall for support, fold it into two halves pressing the fold firmly to form a permanent crease line that will ease the application process. **17-19** All pipes, fitting protrusions and substrate transition joints should be reinforced with polyester tape. **20-24** Starting at the ledge/wall joint, paint a width of WP1 onto the wall and strip up-stand that is wider than the polyester tape. Embed polyester tape into the WP1 undercoat as shown. **25-28** Paint a WP1 undercoat onto the corner walls. Starting just above the strip up-stand and working in an upward direction, bed the polyester corner tape onto WP1 coating maintaining the fold, and keeping the crease line tight against the wall corner. Use the brush to open fold and bed it onto the adjacent WP1 coated wall. **29-31** Apply a second coat of WP1 over the polyester tape brushing it firmly to ensure the polyester tape is fully embedded between the first and second WP1 waterproof coatings. **32-35** Treat pipes, fitting protrusions, and transition joints in a similar manner. Once complete, the walls are ready for waterproofing with BAL WP1. **36-40** Apply a first coat of WP1 over all surfaces stroking the brush in vertical direction. After the first coat has dried, apply a second coat of WP1 stroking the brush in an opposite horizontal direction. **41-42** Remove masking tape and clean strip and ledge. **43** The waterproofing is now complete. After the second WP1 coat has dried tiling may commence with BAL Supercote Rapid Flex Tile Adhesive and BAL Micromax Wall & Floor Grout.

